

AUTUMN ABSTRACT

S265

Designed by Julia's Needleworks



STITCH GUIDE

Distributed by Julia's Needleworks
www.juliasneedleworks.com

THREAD LIST

Rainbow Gallery – Silk Lamé Braid for 18M

SL02 White
SL06 Gold
SL08 Red
SL09 Dark Red
SL11 Dark Yellow
SL12 Purple

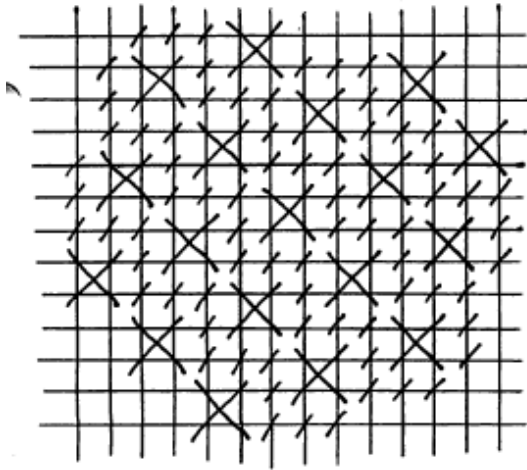
Sundance Beads – Size 14

#551 White/Gold
#284 Opal White
#16 Green
#465 Gold

Hyla's High Cotton

#410 Lilly
#413 Appletini
#302 Orchid
#306 Aubergine
#005 Black
#204 Toffee
#206 Pig Pen
#213 Pinot Grigio
#703 Lemon Sherbet
#700 Mustard
#800 Garnet
#803 Christmas
#807 Rhubarb

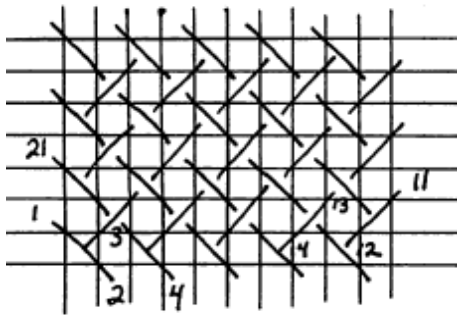
Red Circle



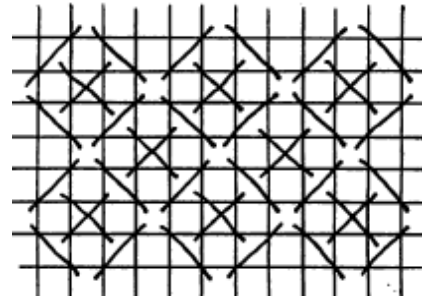
Zigzags = Silk Lamé
 Cross Stitch = 2 or 3 ply High Cotton

Dark: SL09
 Garnet 800
 Medium: SL08
 Christmas 803
 Light: SL08
 Rhubarb 807

Yellow Circle

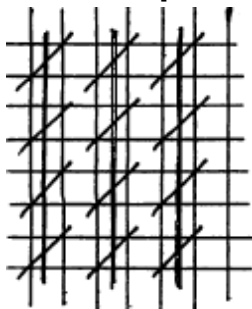


2 strands of Lemon Sherbet 703



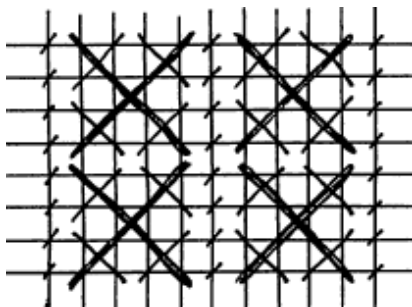
X's in SL11
 Long Stitches in Mustard 700

Dark Purple Lower Right



Vertical Tramé = SL12
 Diagonal = Aubergine 306 1 ply

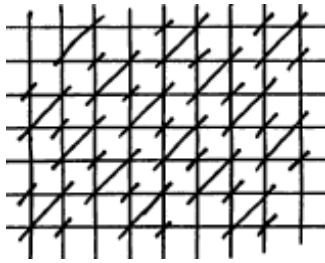
Tan Circle = Rice Stitch



Light/Left Side
 Large X's – 3 ply Pinot Grigio 213
 Cross Hatch in 2 ply Pig Pen 206
 Gold Beads between

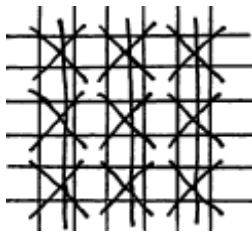
Dark/Right Side
 Large X's – 3 ply Toffee 204
 Cross Hatch in 2 ply Pig Pen 206
 Between – Orchid 302 continental stitch

Red and Yellow Square – Upper Right



Yellow – Lemon Sherbet 703
Mustard 700

Outer Border Gobelin SL06

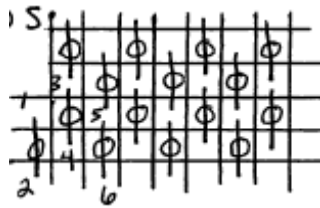


Red = Tramé in SL08

Cross in 1 ply Rhubarb 807

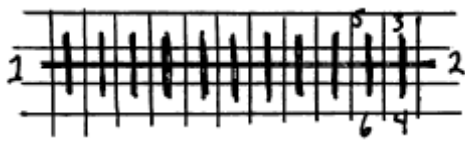
Lighter Side in 3 ply Cross Stitch Rhubarb 807

Green Circle Beads



Light Green = 3 ply Appletini 413–Vertical Brick Stitch

Double White Rows – SL02



Tramé for padding, then Gobelin

White bubbles – outline the larger one in #551 Beads (Sundance). The rest in #284 Beads.
Or, do a Rhodes Stitch in SL02

Upper Right Corner = 3 ply Appletini 413–Horizontal Brick Stitch

Everything else is cross stitch, basketweave, or beaded as shown for outlines of squares.